



An exciting new service for Carriers!

Introducing the new real-time **Odyssey SCHEDULES** platform for Ocean Carriers.

Used either as a stand-alone Schedules service or as part of the end-to-end **Odyssey** shipping solution, it is easy to get going – just Register, Connect and Go.

The Challenge:

Shippers want improved visibility and easy access to reliable shipping information. However, Shipping Lines are struggling to maintain and publish a large volume of information which is frequently changing. This can often lead to delays in getting up to date schedule information published to the company website and the inevitable inconsistencies between this information, internal schedule spreadsheets, schedule information uploaded to INTRA and the schedule data available through search engines. At the very least this is an administrative burden, but clearly also has a direct impact on service levels and even a carrier's reputation!

LOCUS

SOFTWARE LIMITED

Bill of Lading

ODYSSEY

Powered by

Locus Software UK

Unread Discussions: 0 | John Squire | W.E.C. Lines B.V. | dev024279831

Logout

HOME

DASHBOARD

JABBER

SCHEDULES

QUOTATIONS

SERVICE CONTRACTS

BOOKINGS

EQUIPMENT

DOCUMENTS

FINANCE

CONTACTS

DATA

USER

ADMIN

DOCSTORE

DEVELOPER

View live Schedules

Date Range*01/09/201529/09/2015

Trade Route Tag

Trade Routes

Vessels

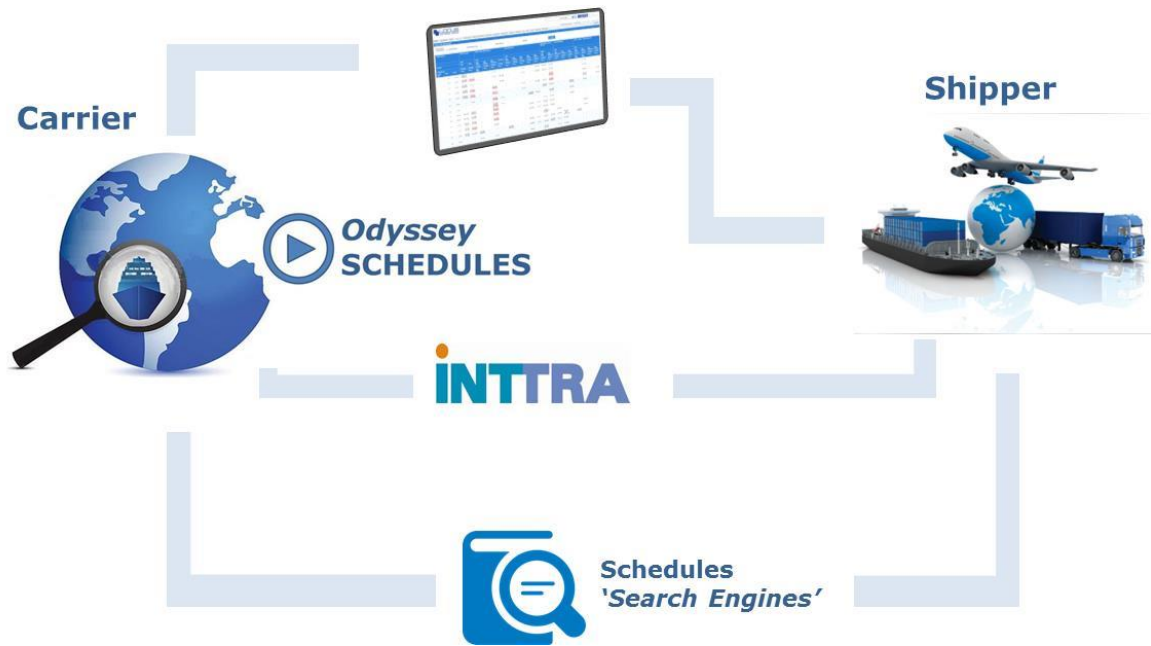
View

Trade Route:			SPM I Service			MSC Turkey Main Service			SAF SB Service					North Spain Canary Service		Levante Express			NWC - Canary - WAF service SB				
			SPM		SPM		SPM		SPM		WESP		SPM		SPM								
Vessel:			Elite	Alana	MSC Tokyo	MSC Soraya	MSC Dympha	Hamburg	MSC Athos	MSC Arbatax	MSC Azov	MSC Athens	MSC Alajaco	WEC Goya	WEC Velazquez	MSC Samantha	MSC Maureen	MSC Loretta	MSC Mandy	MSC Atlantic	MSC Nederland	MSC Santhya	
Voyage No:			EC336A	EC335R	NTS37A	NTS38A	NTS34R	NTS35A	NZS37A	NZS38A	NZS34A	NZS36A	EG335A	EG334A	NL335A	NL337A	NL336A	NTS37A	NTS38A	NTS39A	NTS34A		
Week No			TEU 0	TEU 0	TEU 0	TEU 0	TEU 0	TEU 0	TEU 0	TEU 0	TEU 0	TEU 0	TEU 0	TEU 0	TEU 0	TEU 0	TEU 0	TEU 0	TEU 0	TEU 0	TEU 0		
Day			TEU 0	TEU 0	TEU 0	TEU 0	TEU 0	TEU 0	TEU 0	TEU 0	TEU 0	TEU 0	TEU 0	TEU 0	TEU 0	TEU 0	TEU 0	TEU 0	TEU 0	TEU 0	TEU 0		
	Tue	01/09	GB FXT EC336A	I	I	I	PT SIE	I	I	I	PT SIE	I	DE HAM	MA CAS	ES VGO	I	I	I	I	BE ANR	I	I	
	Wed	02/09	NL MOE EC336A	ES VGO EC335R	I	I	PT SIE	BE ANR	I	I	PT SIE	I	DE HAM	MA CAS	ES VGO	I	I	I	I	BE ANR	I	I	
	Thu	03/09	NL RTM EC336A	PT LEI	I	I	I	BE ANR	I	I	I	I	I	I	ES GJ EC334A ES BIO	I	I	I	I	GB FXT	I	ES LPA	
	Fri	04/09	NL RTM EC336A	PT LIS EC335R	I	I	FR LEH NT334R	I	I	I	ES LPA	I	BE ANR	ES LPA	ES BIO EC336A	I	I	I	I	FR LEH GB FXT	I	ES LPA	
	Sat	05/09	NL RTM EC336A	PT SET EC335R	I	I	GB FXT NT336A	I	I	I	ES LPA	I	I	ES LPA ES SCT	ES VGO	I	I	GB FXT NL336A	I	FR LEH	I	I	
	Sun	06/09	I	PT LEI	I	I	DE BRV NT336A	PT SIE	I	I	I	NL RTM NZS36A	FR LEH	I	ES VGO PT SIE	I	I	I	BE ANR	I	I	I	
37	Mon	07/09	I	I	I	I	DE HAM DE BRV NT336A	PT SIE	I	I	I	I	I	PT SIE	PT SIE	I	I	I	BE ANR	I	I	I	
	Tue	08/09	ES VGO	GB FXT EC337A	I	I	I	I	I	I	I	DE HAM	PT SIE	ES VGO PT SIE	MA CAS	I	I	I	I	I	I	I	
	Wed	09/09	ES VGO	NL MOE GB FXT	I	I	BE ANR NT336A	I	I	I	I	DE HAM	PT SIE	ES VGO	MA CAS	I	I	I	I	ES LPA	I	I	
	Thu	10/09	PT LIS PT LIS	NL RTM NL MOE	I	I	BE ANR NT336A	I	I	I	I	I	I	ES GJ EC337 ES BIO	I	NL RTM	I	I	I	ES LPA	I	I	
	Fri	11/09	PT SET PT LIS	NL RTM EC335R	I	I	BE ANR	I	I	I	I	BE ANR	ES LPA	ES BIO	ES LPA	NL RTM	BE ANR GB FXTNL337	I	I	RU LED NY337A	I	I	
	Sat	12/09	PT SET PT LEI	NL RTM	FR LEH NTS37A	I	I	I	NL RTM NZS37A	I	I	BE ANR	ES LPA	ES VGO	ES LPA ES SCT	ES VLC	BE ANR	I	I	I	I	I	
	Sun	13/09	I	I	GB FXT	I	PT SIE	I	I	I	I	FR LEH	I	ES VGO PT SIE	I	ES VLC	NL RTM	I	I	I	I	I	

The Solution:

While most schedules initiatives are focused on providing information for the Shipper, **Odyssey SCHEDULES** from Locus Software is designed to deal with the issue at source by providing a solution for the Shipping Line, a powerful solution which;

- eliminates the time and effort required to maintain this frequently changing data
- improves flow of information and ability to publish across a Shipping Line's network in real time
- provides users with the tools to easily access this information across multiple devices
- includes plug-in's for a Shipping Line's website
- has a professional look and feel
- is fully integrated with the commercial and booking features



Odyssey SCHEDULES supports all access options for Shippers;

- Web Access through **Odyssey**, directly or as an embedded component of a Carrier's website
 - INTTRA (via **Odyssey**/INTTRA integration)
 - Schedule 'Search Engines'
-

Manage your voyage data

In **Odyssey SCHEDULES** you can easily manage your schedules through the *Trade Route* and *Voyage* modules. Once your trade routes and voyages are created, the data is immediately and seamlessly available to other features like the *Live Schedule View*, *Route Finder*, *Port Operations Report*, and other solution components.

Live Schedules View

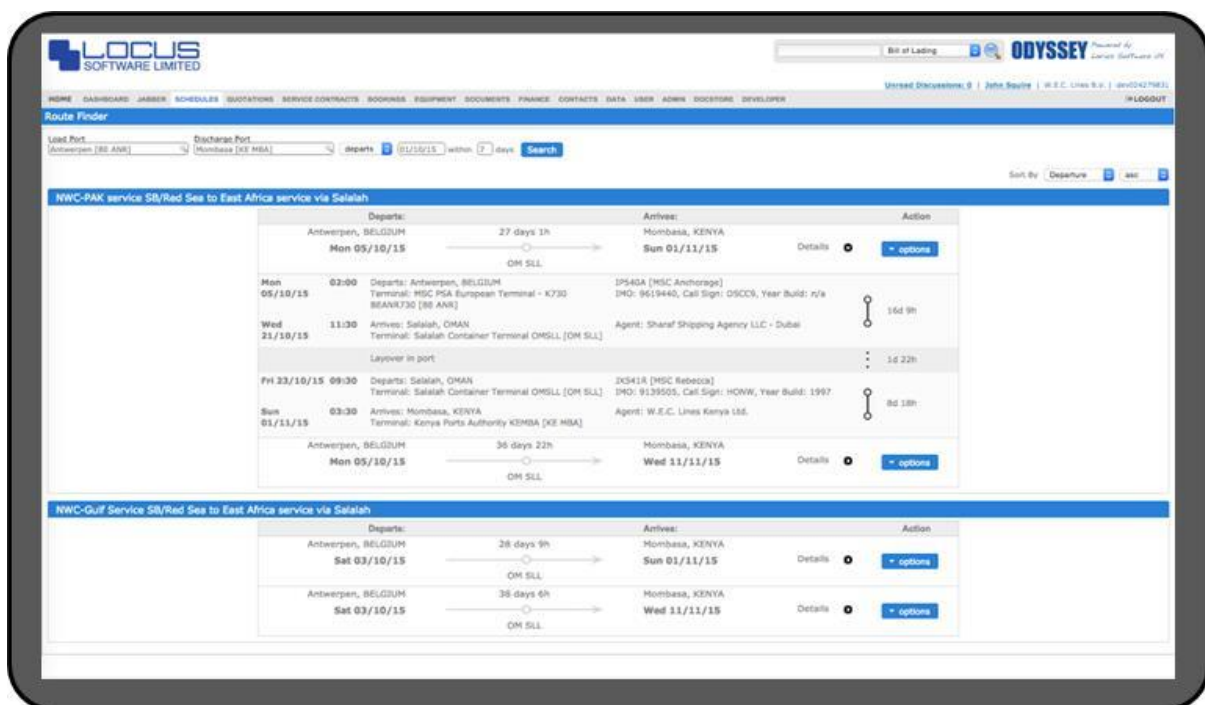
The Live Schedules View features:

- Filter by date, trade and vessel
- Powerful inline editing which enables Shipping Lines to easily maintain their schedule information directly in **Odyssey**
- All changes published immediately

Intelligent Routing with the new Route Finder

Use the route finder to search your schedules and display matching results. The route finder utilises the same technologies commonly found in Satellite Navigation systems to interrogate your trade routes and voyages to dynamically present you with the most optimal routing solution between the two locations in your search. There is no need to maintain a Port Pair or Transshipment matrix.

- Priority settings on a Trade Route
- Search by departure or arrival date
- Sort results by departure, arrival or duration and ascending or descending order
- Results including extended information such as agent details at POL/POD, terminal closing dates and terminal address
- Results can be printed or sent direct to an email address
- Directly Create Rate Enquiry or Booking options



Integration with INTTRA's Ocean Schedules

When creating or editing a voyage you can immediately submit the voyage data to INTTRA. As INTTRA Ocean Schedules requires a point-to-point schedule for all possible destinations, the intelligent route finder dynamically determines the possible routing options based on your trade routes and voyages and automatically builds the schedule data required for INTTRA. This is done without the need to maintain any Port Pair tables or a Transshipment Matrix. All you need to do is click a button and the system does the rest!

Port Operations Report

In addition, **Odyssey SCHEDULES** includes facilities for the Port Agent or the Vessel's crew to submit arrival/berthing/departure information and the Statement of Facts directly to the Shipping Line for processing.

Odyssey SCHEDULES is a new service for Shipping Lines which eliminates the burden associated with the maintenance of Schedules, enables real-time publishing to ensure a single, consistent schedule is available at all sources, and enhanced to include the Port Operation Report.

*All you need to do is Register online at www.locussoftware.com and then start realising the benefits of **Odyssey SCHEDULES***